

# Opportunities in additive manufacturing for advanced nuclear energy systems

Molten Salt Reactor Workshop 2020

Kurt A. Terrani, Ph.D.  
Director – Transformational Challenge Reactor

October 15, 2020

ORNL is managed by UT-Battelle, LLC for the US Department of Energy

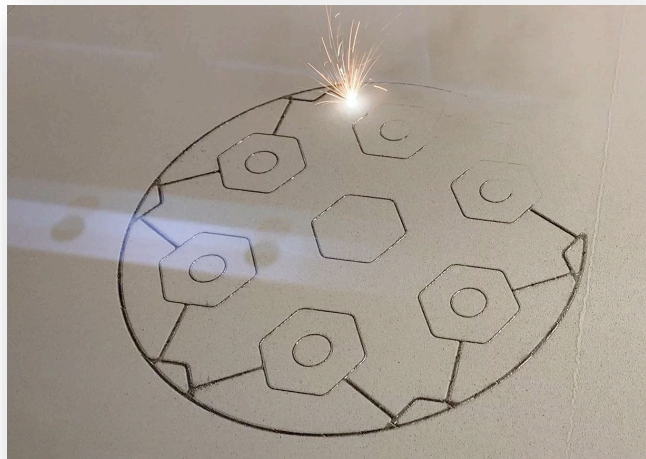
# Outline

- Myriad additive manufacturing methods and advanced hybrids
- Enabling opportunities in AM/AI being pursued by the Transformational Challenge Reactor program
  - Improved design for enhanced operation
  - Advanced materials enabled by additive manufacturing
  - Integrated sensing for enhance health monitoring and autonomy
  - Rapid (on-the-fly) quality assessment and certification
- Immediate opportunities

# Myriad additive manufacturing methods span a vast dimensional scale across a range of material systems

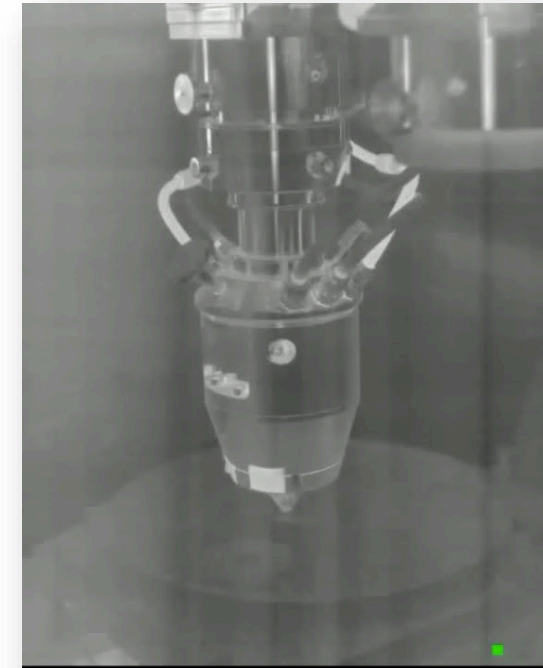
## Powder bed techniques

- Metal or ceramic powder or slurry sequentially spread and fused in 2D layers
- Fusion achieved via melting (e.g. laser or e-beam source) or binding (via binder jet or lithography)
- Ability to accommodate most complex geometry with best spatial resolution
- Limited to a single material system
- Build volumes usually  $< 0.05 \text{ m}^3$  with some extending up to  $0.3 \text{ m}^3$



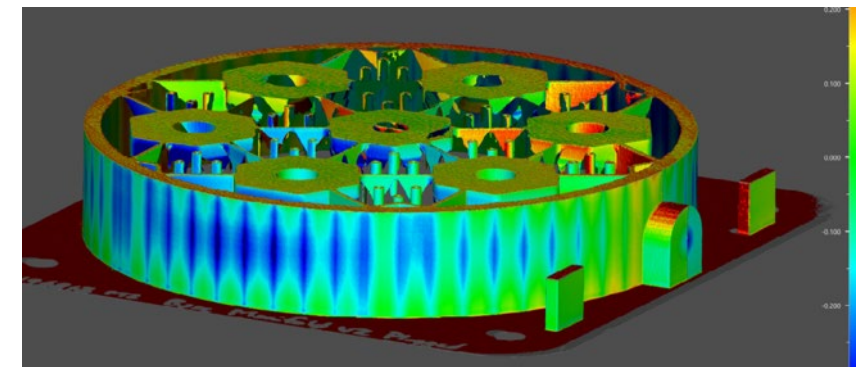
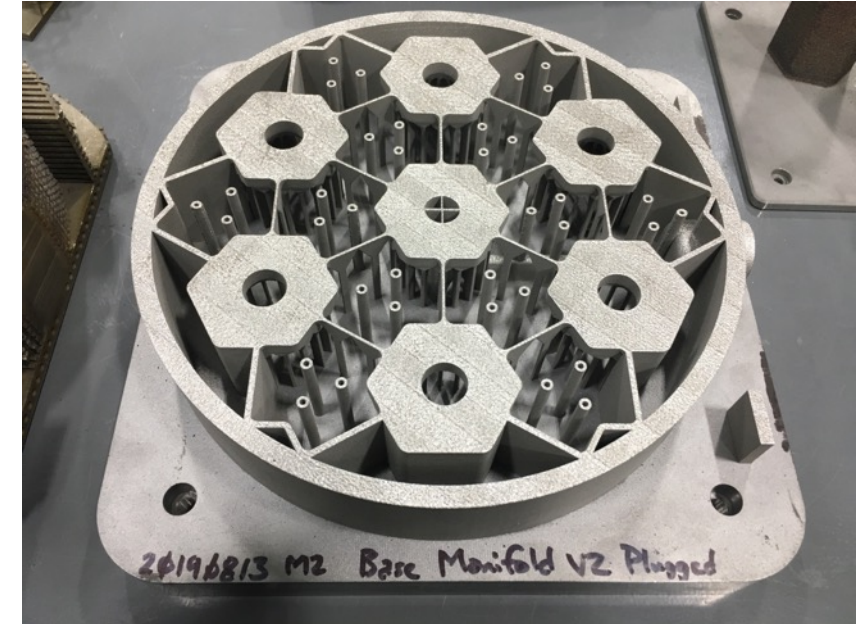
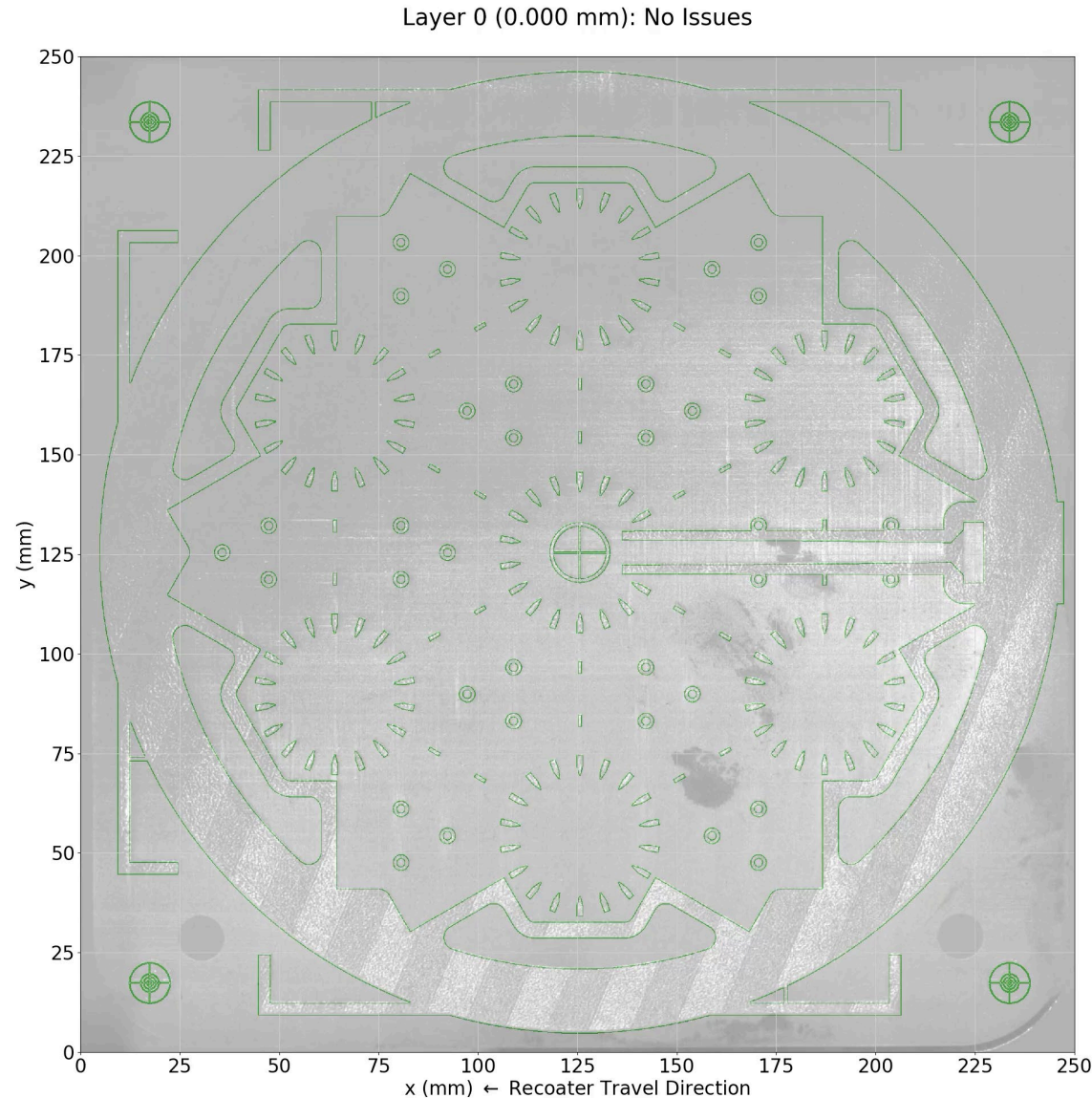
## Direct deposition techniques

- Metal powder or wire or ceramic slurry directly deposited as continuous point on substrate
- Deposition via melting (e.g. laser or arc welding), drying, or curing
- Complex tool path design is needed, and less geometric complexity is accommodated
- Flexibility to accommodate multiple material systems
- Build volumes usually  $< 0.5 \text{ m}^3$  with some extending up to  $7 \text{ m}^3$





# Example of powder bed system: 3D printing of stainless steel via laser powder bed fusion technique

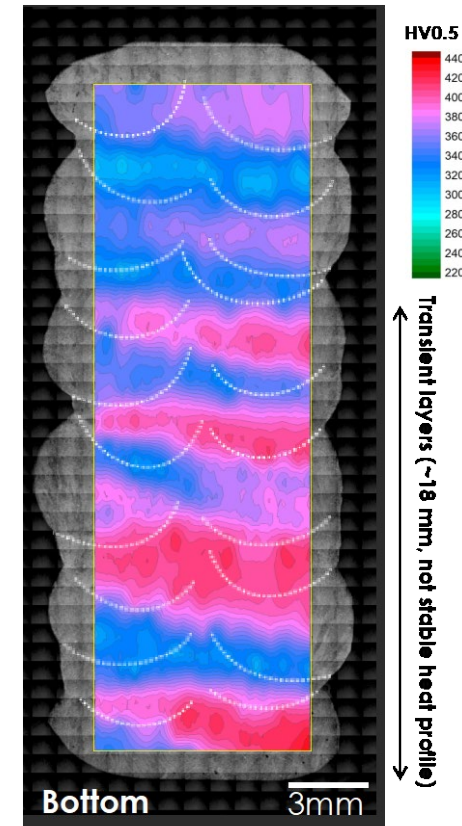
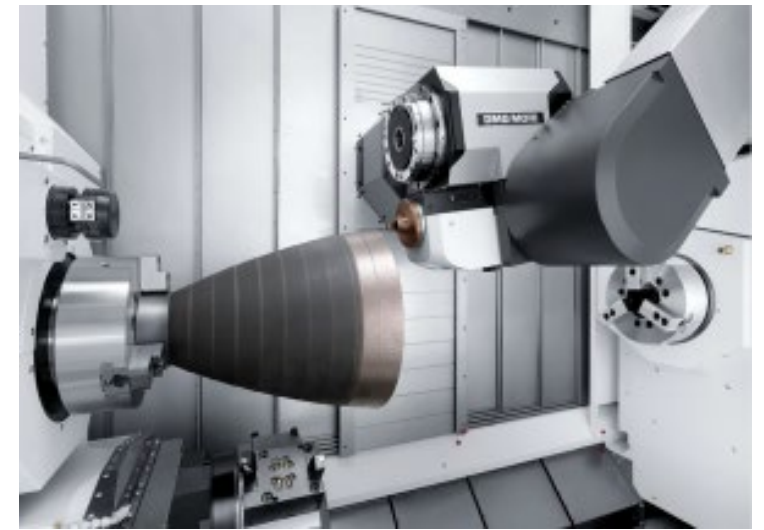
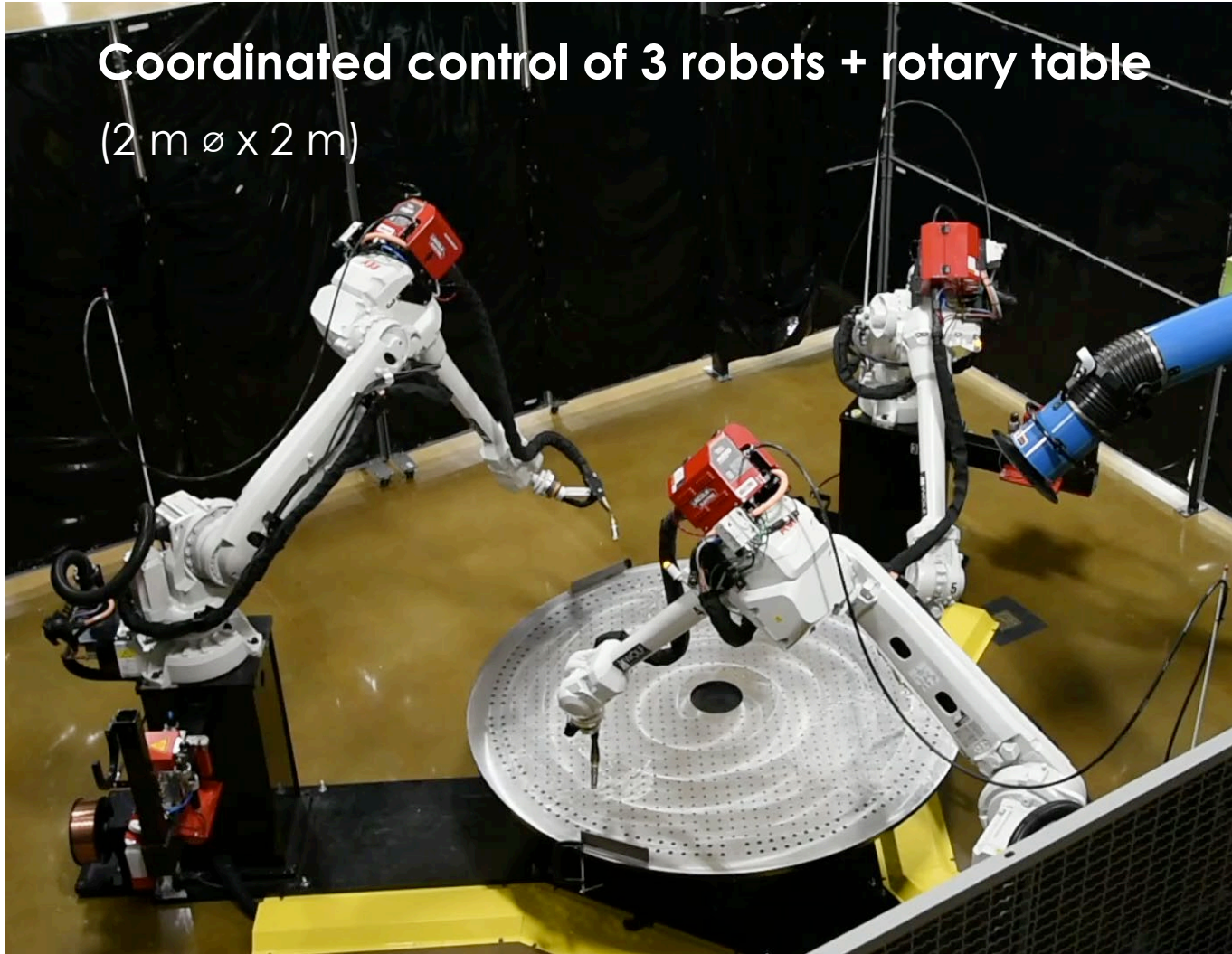


L. Scime, V. Paquit (ORNL)



# Example of large direct deposition system: Medusa wire arc additive

**Coordinated control of 3 robots + rotary table**  
(2 m  $\varnothing$  x 2 m)



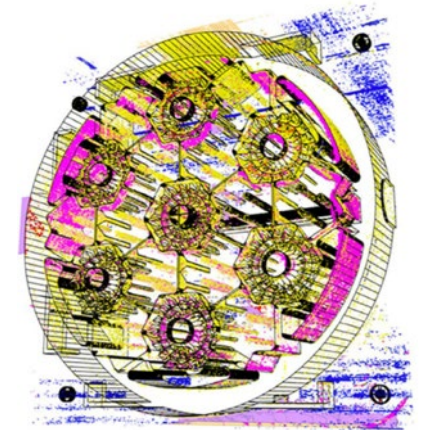
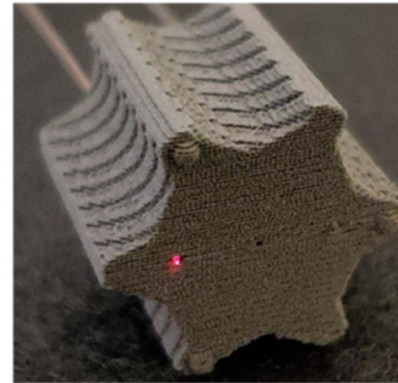
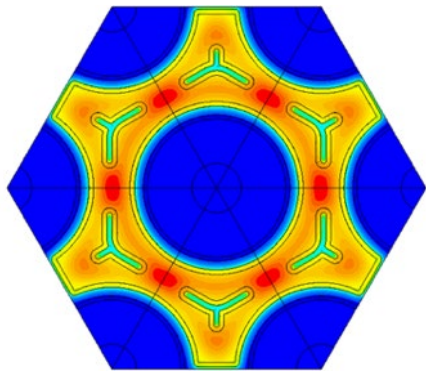
# TCR is bringing to bear additive manufacturing (AM) and artificial intelligence (AI) to deliver a new approach

Using AI to navigate an unconstrained design space and realize superior performance

Leveraging AM to arrive at high-performance materials in complex geometries

Exploiting AM to incorporate integrated and distributed sensing in critical locations

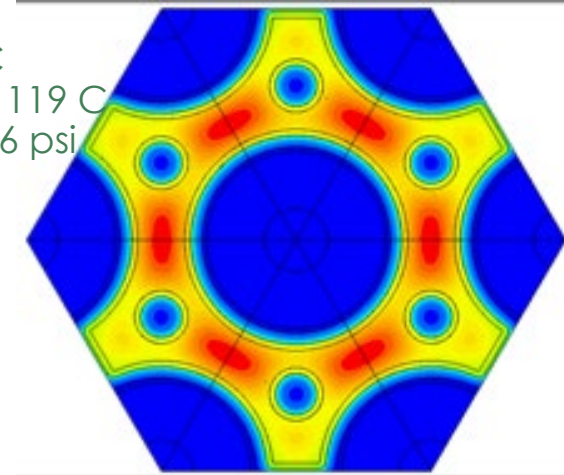
Using AI to assess critical component quality using in situ manufacturing signatures



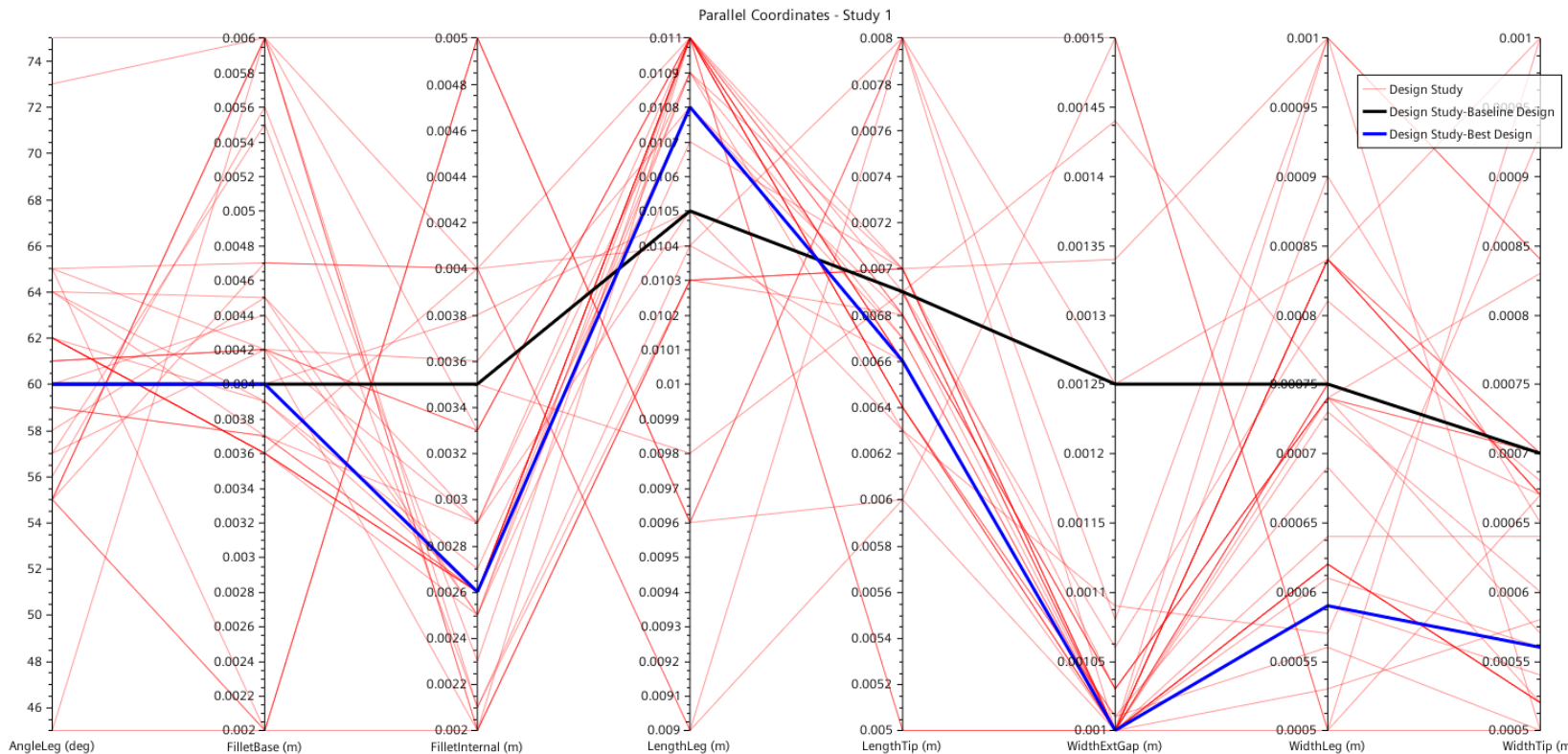


# Exploring an unconstrained design space to realize superior performance: Coolant channel shape optimization in fuel elements

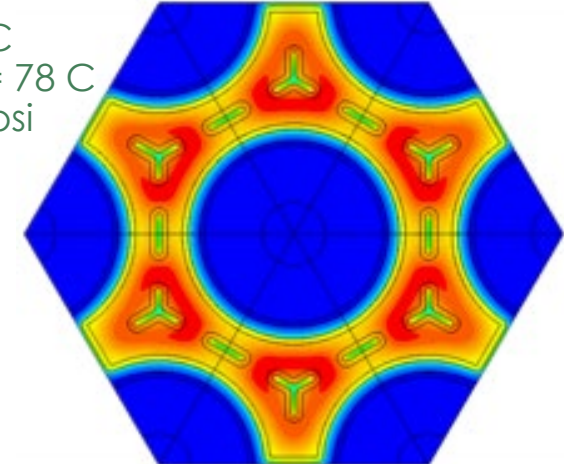
Tmax = 687 C  
 in-plane  $\Delta T$  = 119 C  
 Core  $\Delta P$  = 0.56 psi



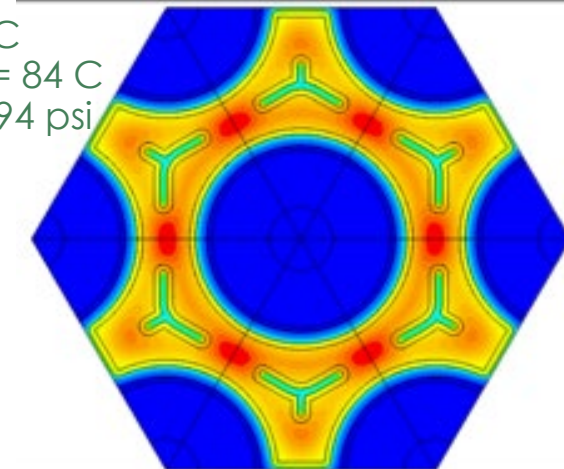
parameter space search to find optimized cooling channel design



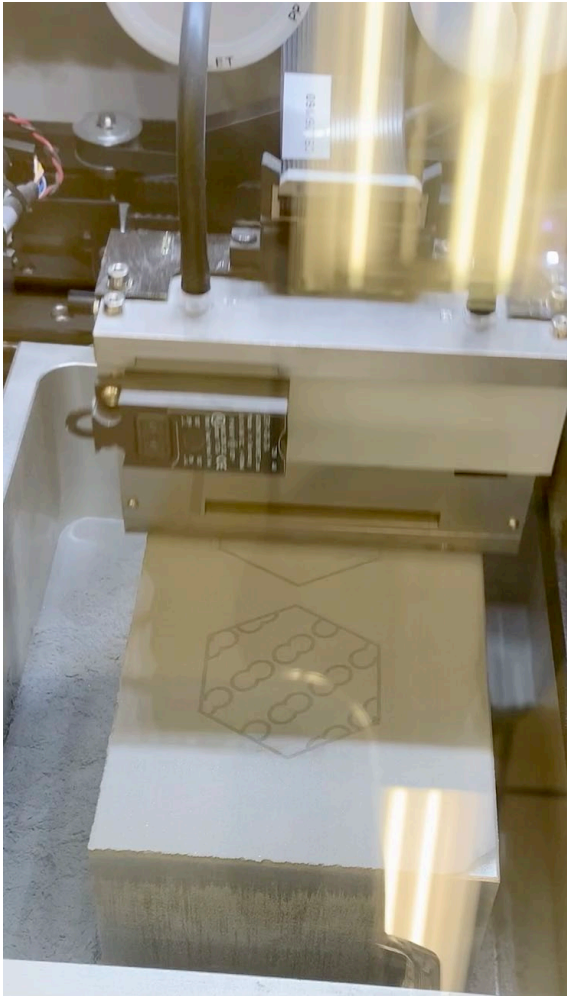
Tmax = 622 C  
 in-plane  $\Delta T$  = 78 C  
 Core  $\Delta P$  = 1 psi



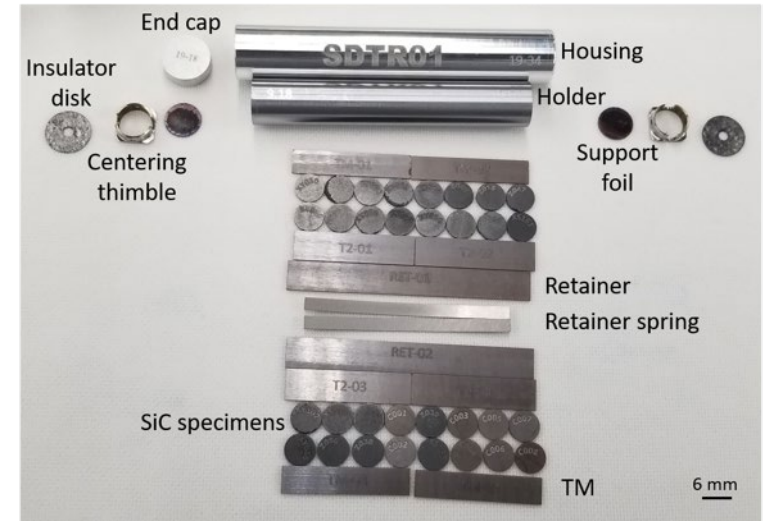
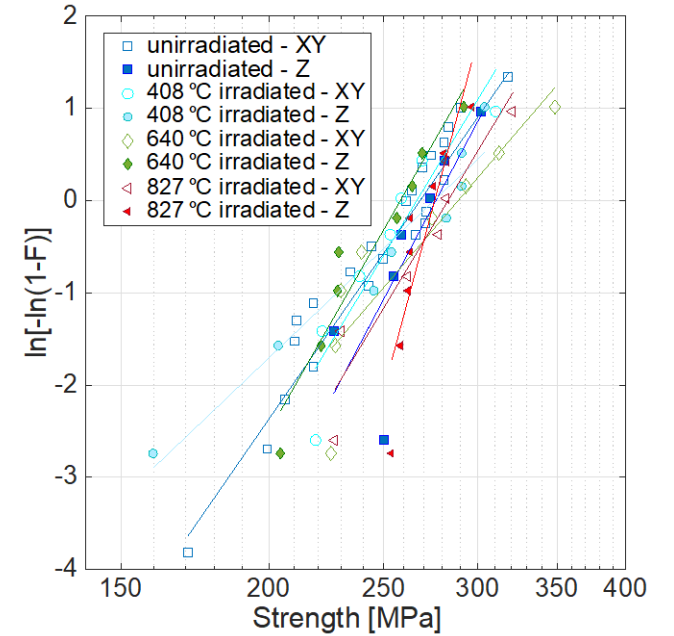
Tmax = 624 C  
 in-plane  $\Delta T$  = 84 C  
 Core  $\Delta P$  = 0.94 psi



# Leveraging AM to arrive at high-performance materials in complex geometries: 3D printing and neutron irradiation of silicon carbide as matrix for advanced fuel elements



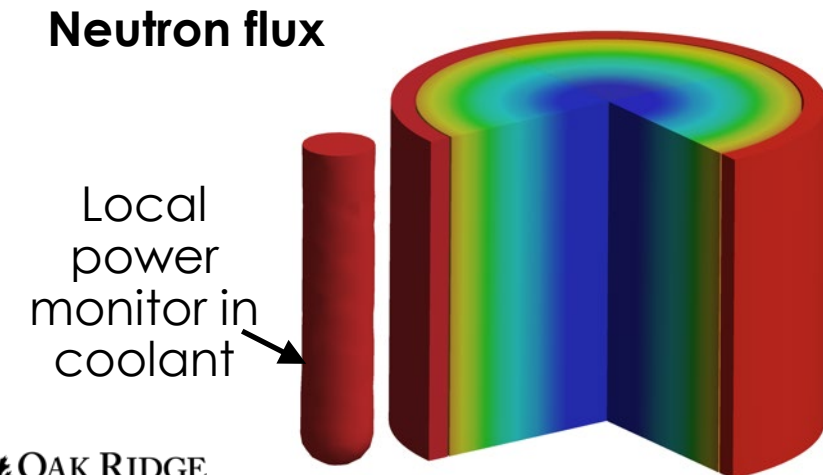
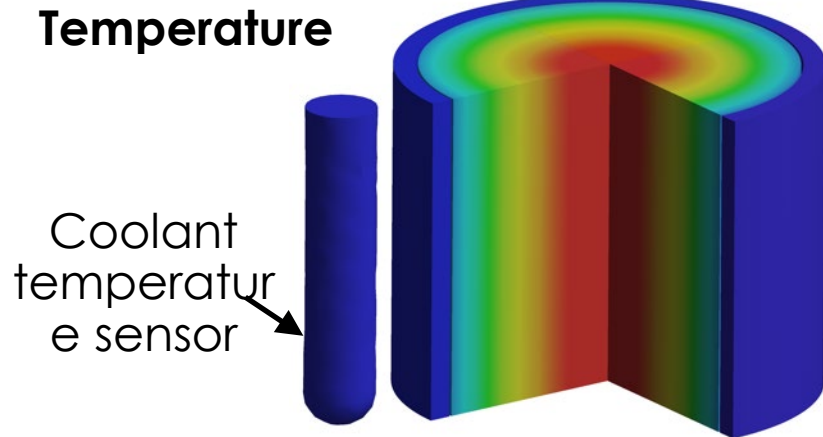
No degradation in strength after neutron irradiation



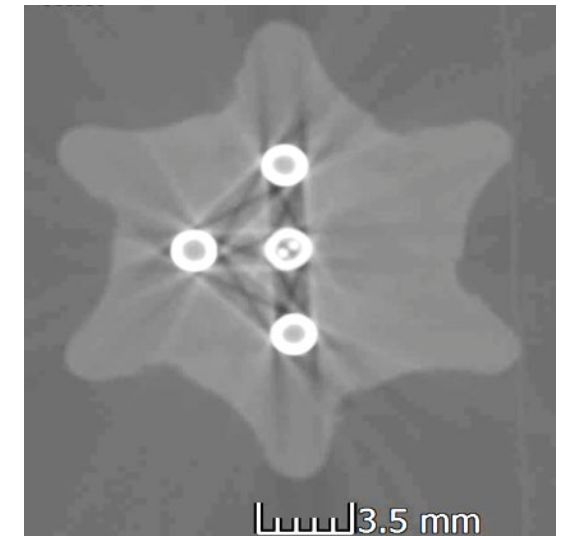
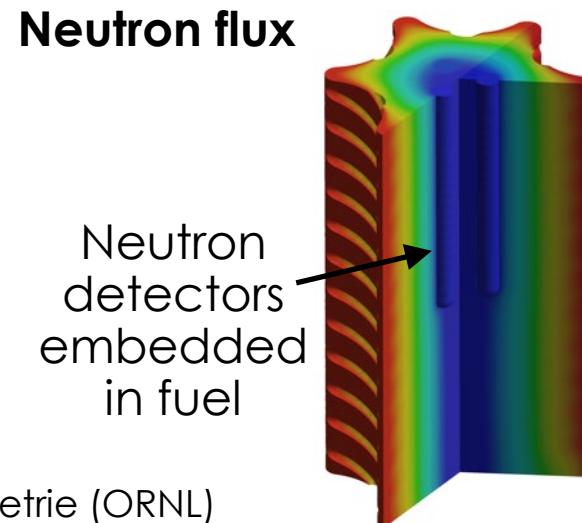
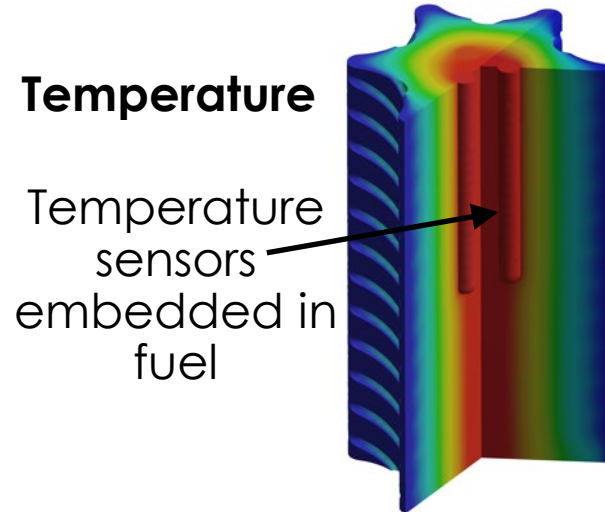


# Exploiting AM to incorporate integrated and distributed sensing in critical locations: incorporation of sensors in 3D printed structures

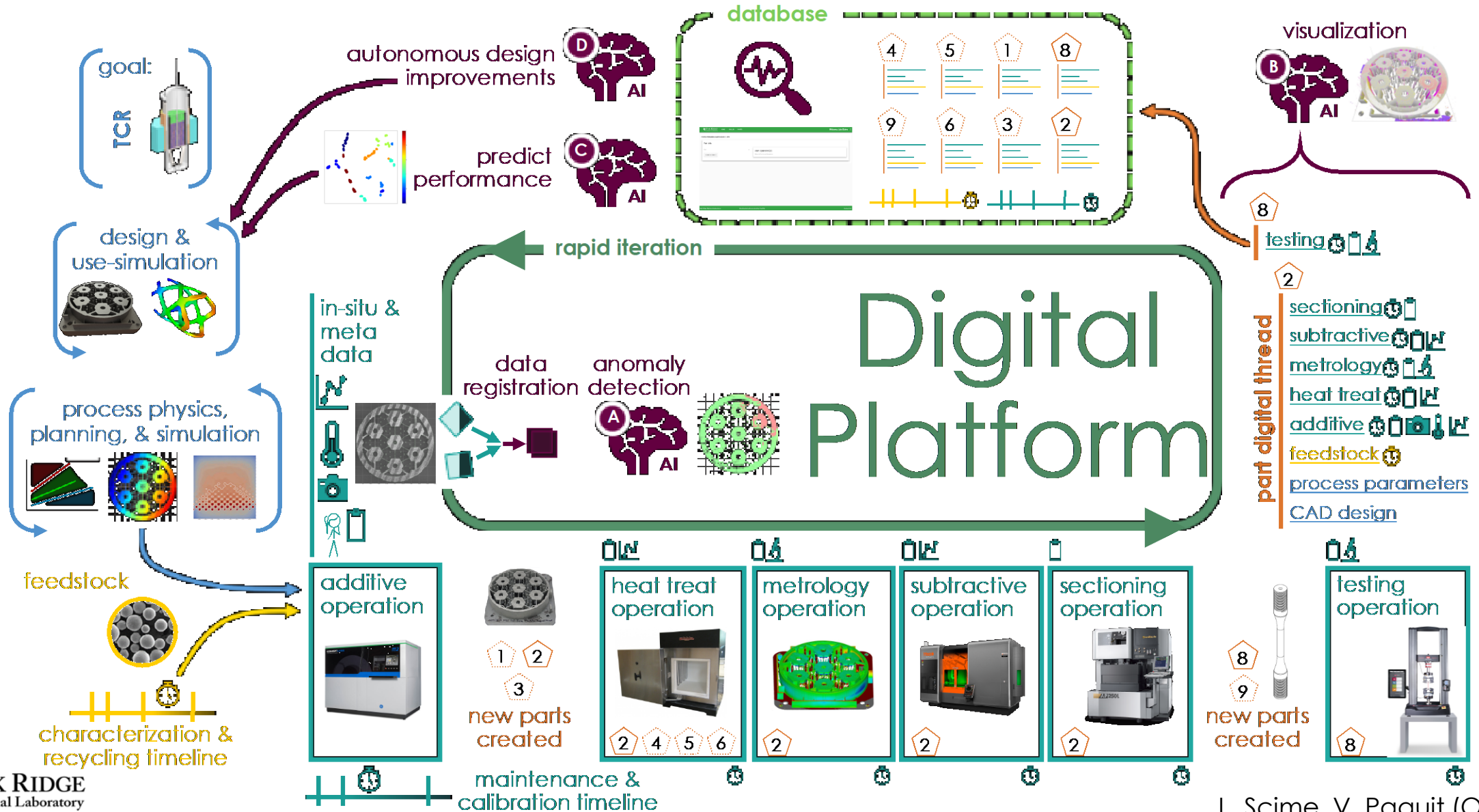
## Conventional sensing



## Integrated sensing



# Using AI to assess critical component quality using in situ manufacturing signatures: Digital Platform for quality assurance



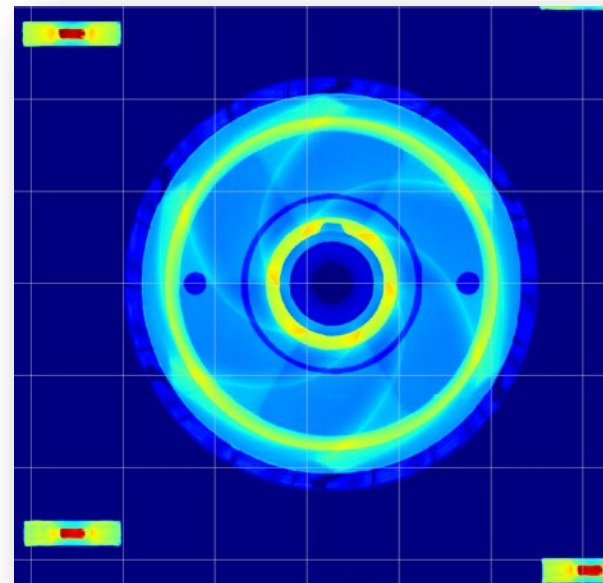


# Additive manufacturing of salt pump impeller for Kairos Power

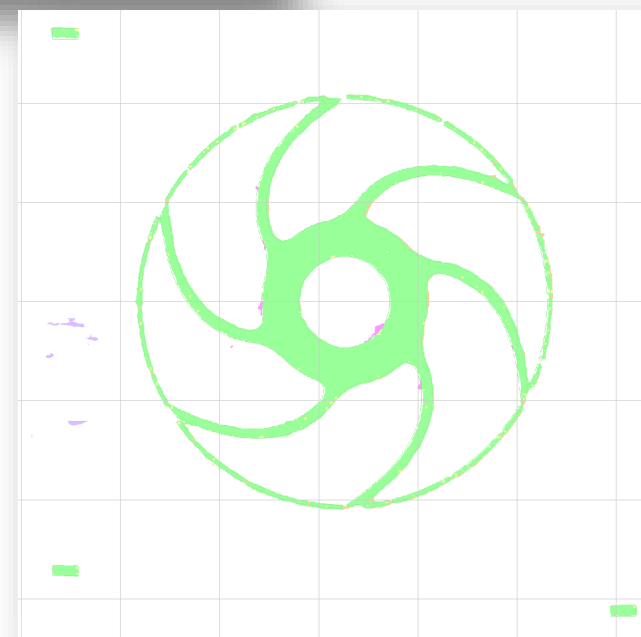
As ORNL builds novel reactor, nuclear industry benefits from technology



At the Department of Energy Manufacturing Demonstration Facility at ORNL, this part for a scaled-down prototype of a reactor was produced for industry partner Kairos Power. Credit: Kairos Power



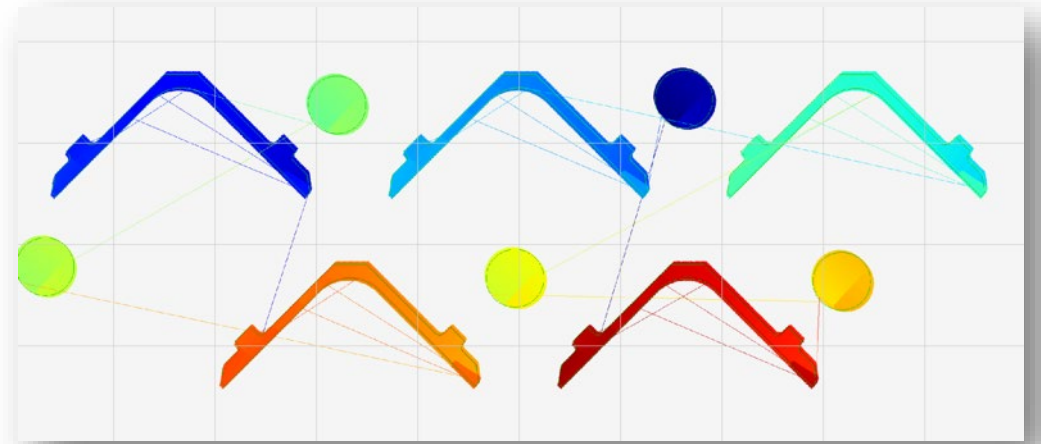
Reconstruction of in situ manufacturing data



# Additive manufacturing of fuel assembly components for Tennessee Valley Authority



## Reconstruction of in situ manufacturing data



3D printed fuel assembly brackets as first ever safety-related components to be inserted into a nuclear power plant. The digital signatures collected during additive manufacturing and processed using artificial intelligence techniques lay the ground for an improved, accelerated, and cost-effective approach for nuclear quality certification.