

copenhagen atomics

# path towards a 1MW demonstration MSR

aslak stubsgaard  
cto & cofounder



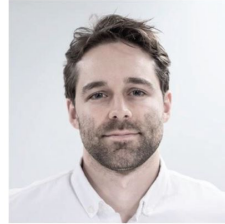
This ball made out of Thorium,  
can supply all the energy you need for your entire life

# copenhagen atomics' core team



**Thomas Jam Pedersen**  
Founder and Chairman  
of the Board

*Education: M.Sc. Electrical  
Engineering and Software*



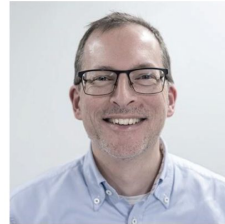
**Aslak Stubsgaard**  
Founder and CTO

*Education: M.Sc. Theoretical  
Physics*



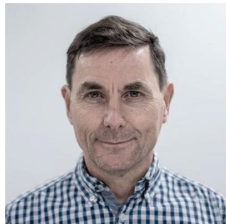
**Thomas Steenberg**  
Founder and CEO

*Education: M.Sc. Chemical  
Engineering, Ph.D. Material  
Science*



**Peter Szabo**  
Founder and CFO

*Education: M.Sc. Chemical  
Engineering, Ph.D. Flow of  
non-newtonian fluids*



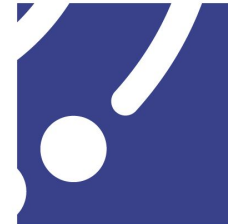
**Peter Nerenst**  
Member of the board

*Education: M.Sc. Mechanical  
Engineering*

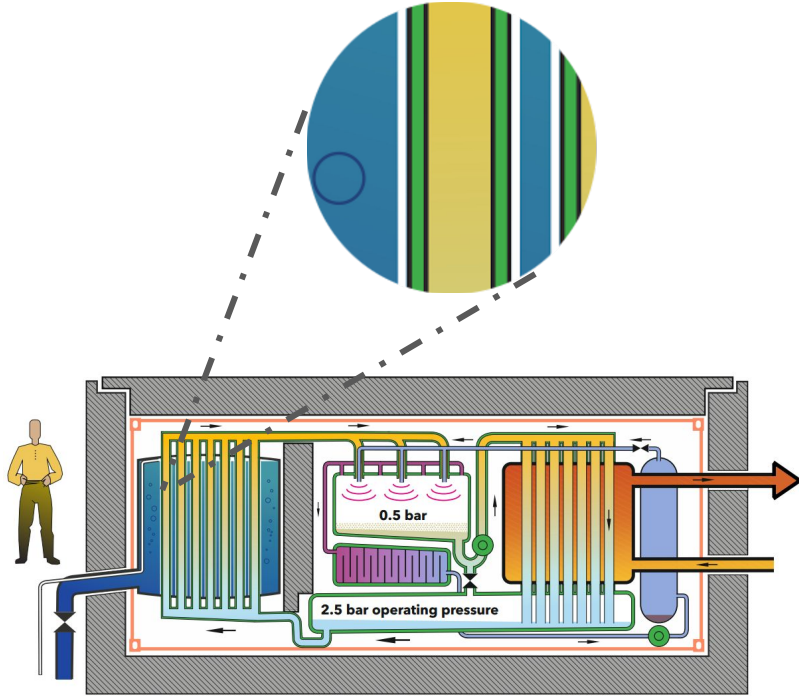


**Richard Tøpholm**  
Member of the board

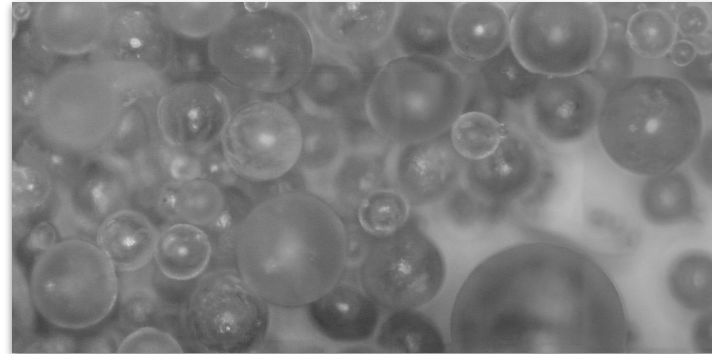
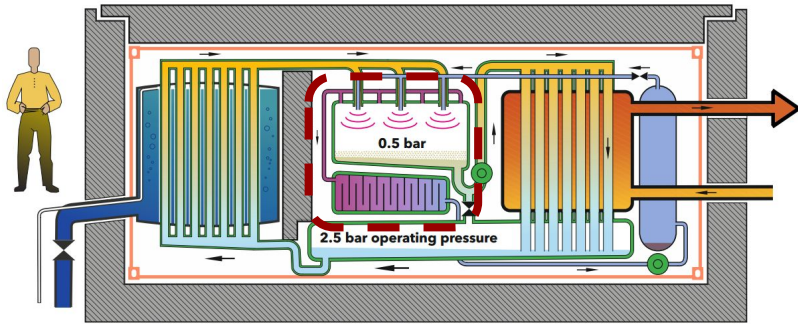
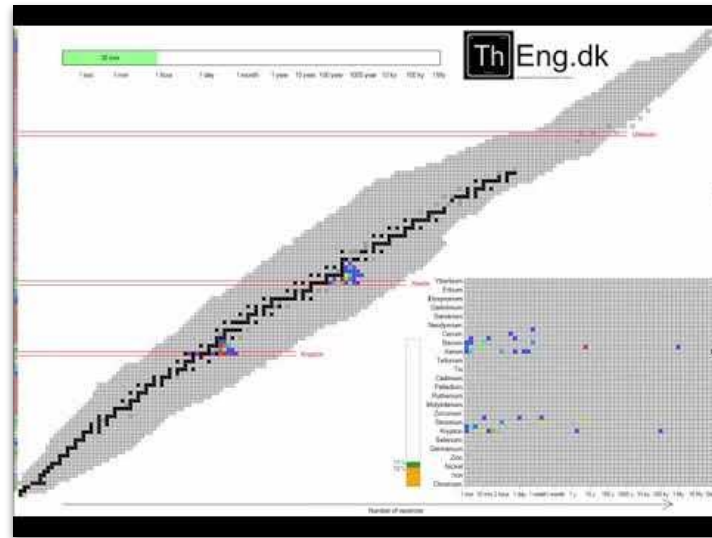
*Education: M.Sc. Physics  
and Engineering*



our solution  
room-temperature / unpressurized  
heavy water moderated

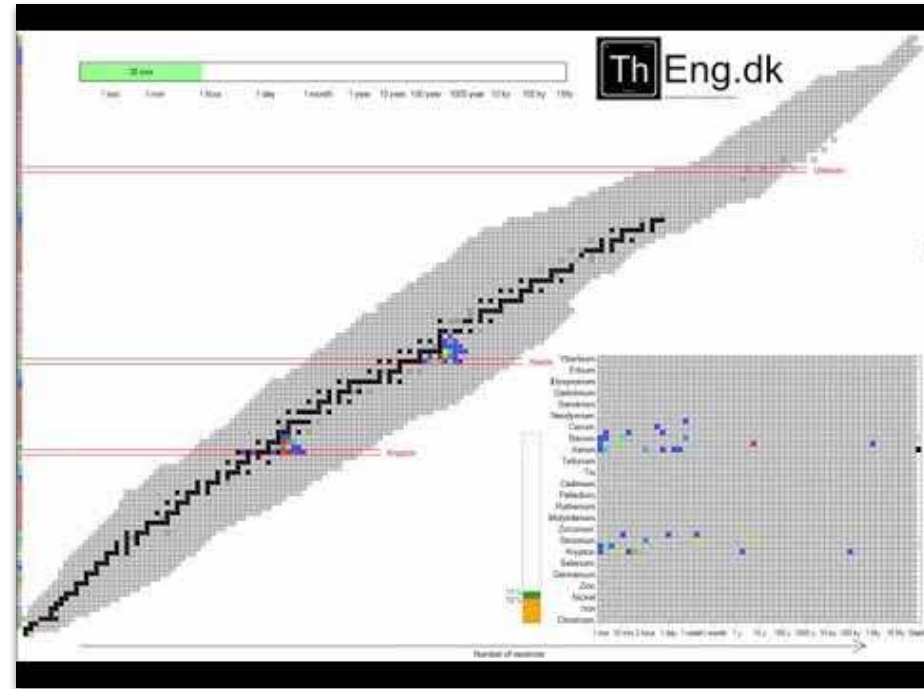
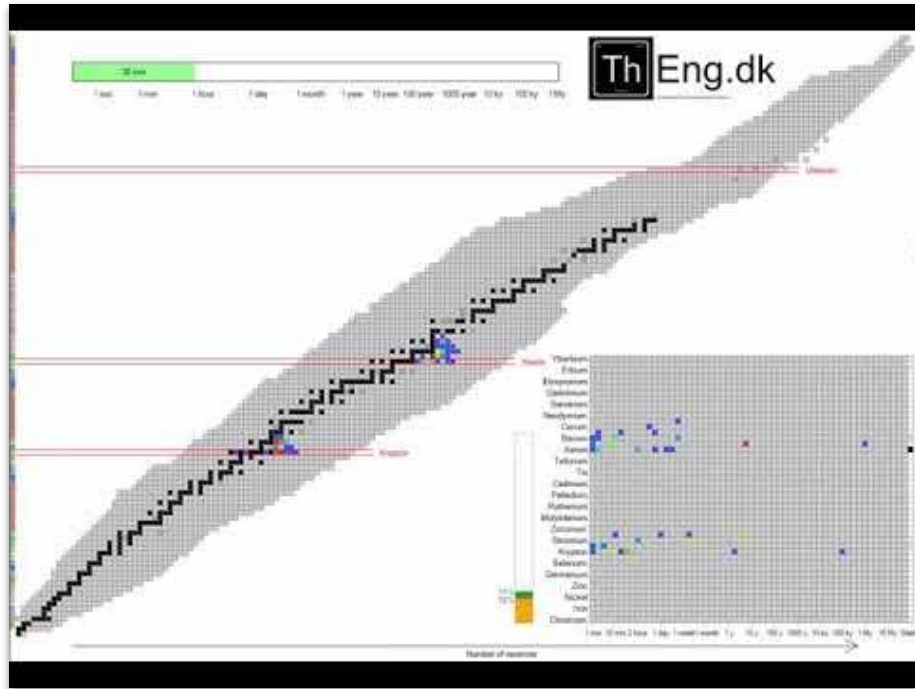


our solution  
vacuum spraying

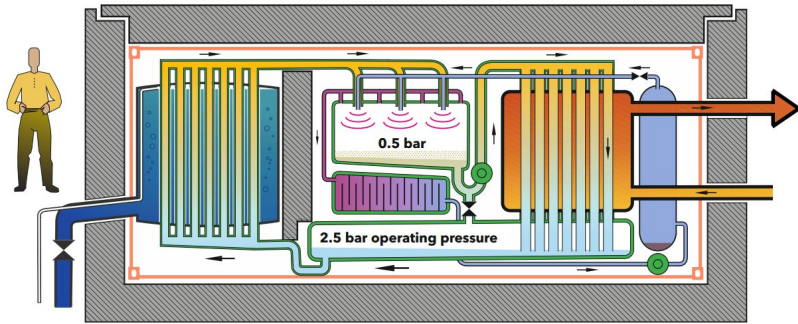
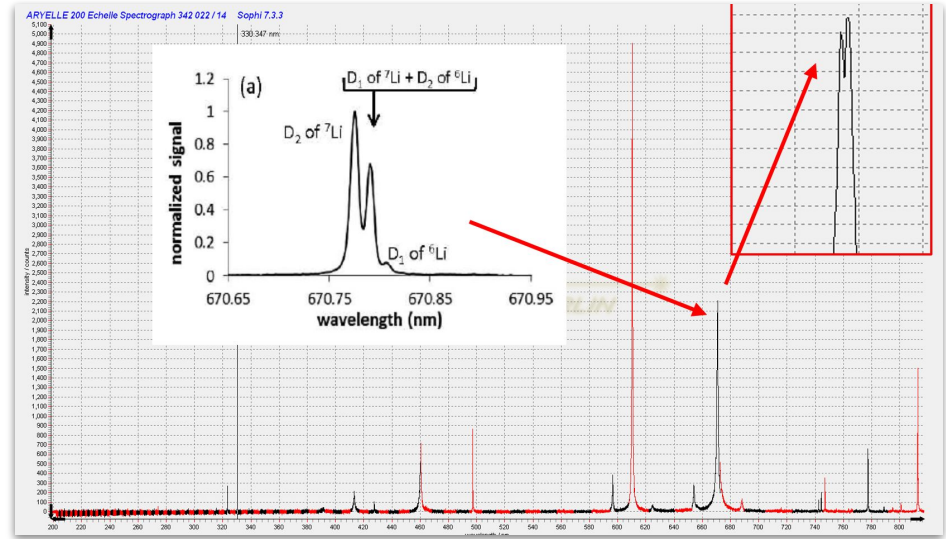




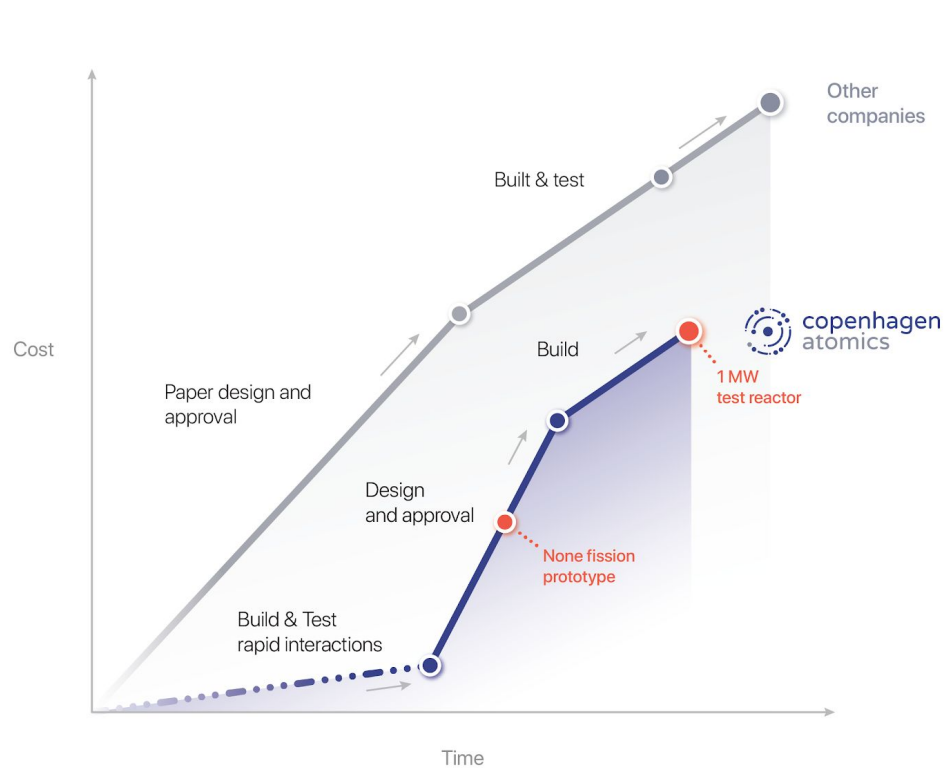
# our solution vacuum spraying



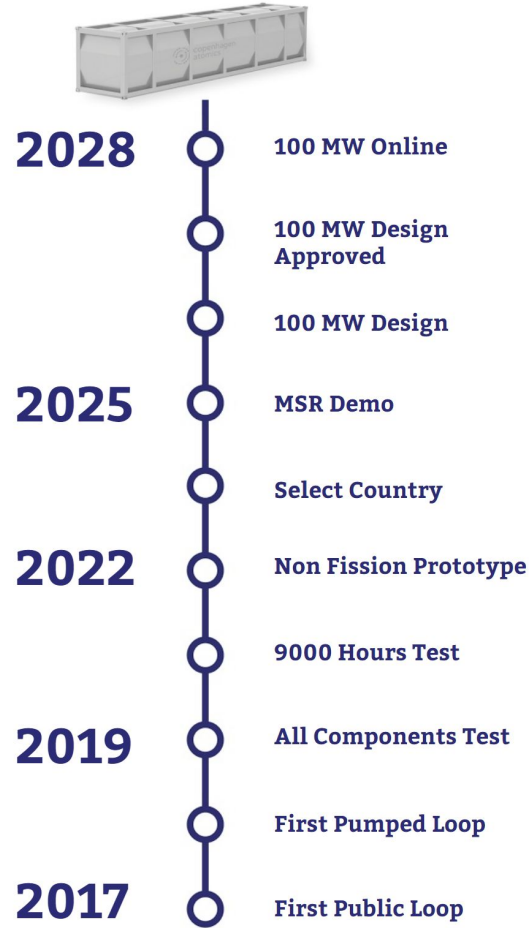
our solution  
libs  
laser induced breakdown spectroscopy



# development philosophy build and test hardware



# development philosophy milestones



aircraft reactor experiment  
2.5MW in november 1954

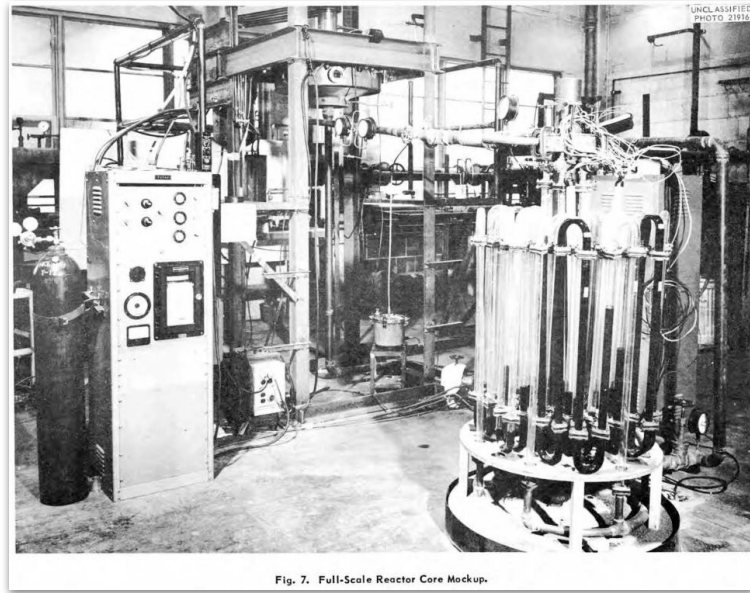


Fig. 7. Full-Scale Reactor Core Mockup.



Fig. 23. Bottom View of Reactor Ready for Transfer to Burial Ground.

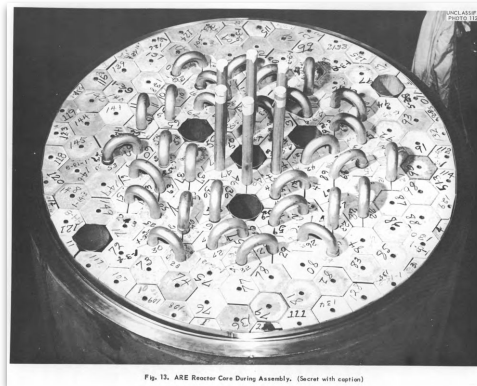


Fig. 12. ARE Reactor Core During Assembly. (Secret with caption)

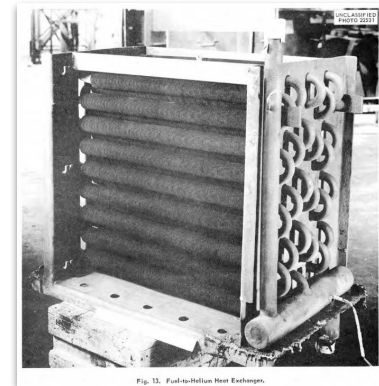


Fig. 13. Full-In-Hellum Heat Exchanger.



development philosophy  
build and test hardware

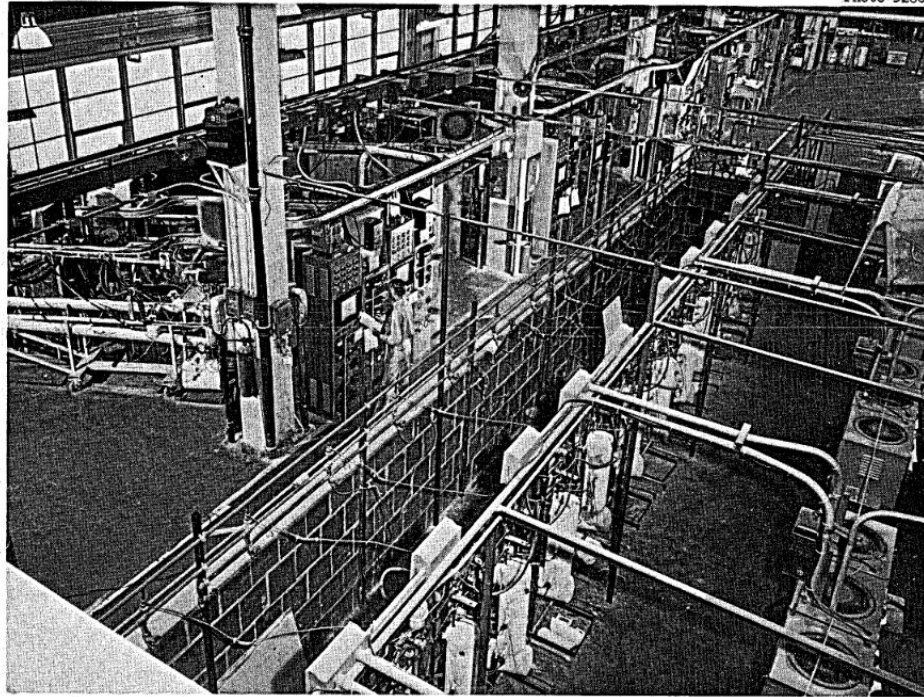


Fig. 11. Photograph of Molten-Salt Corrosion Testing Loop Operating Area.

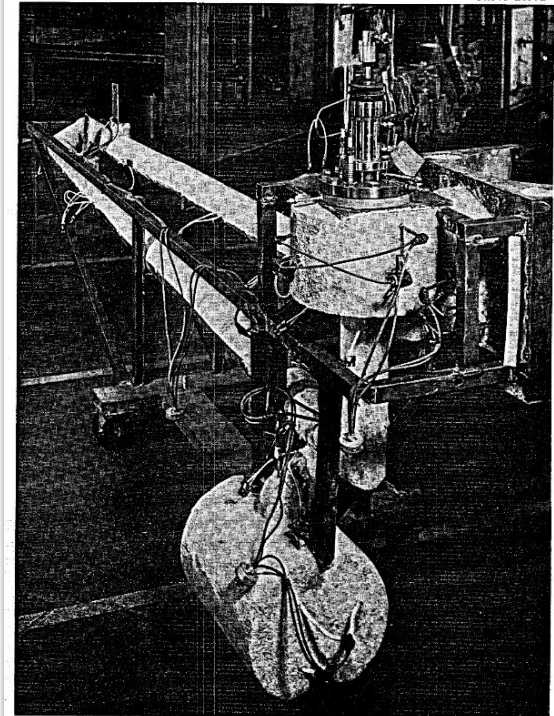


Fig. 3. Photograph of Molten-Salt Corrosion Testing Loop on Mobile Dolly.



development philosophy  
build and test hardware

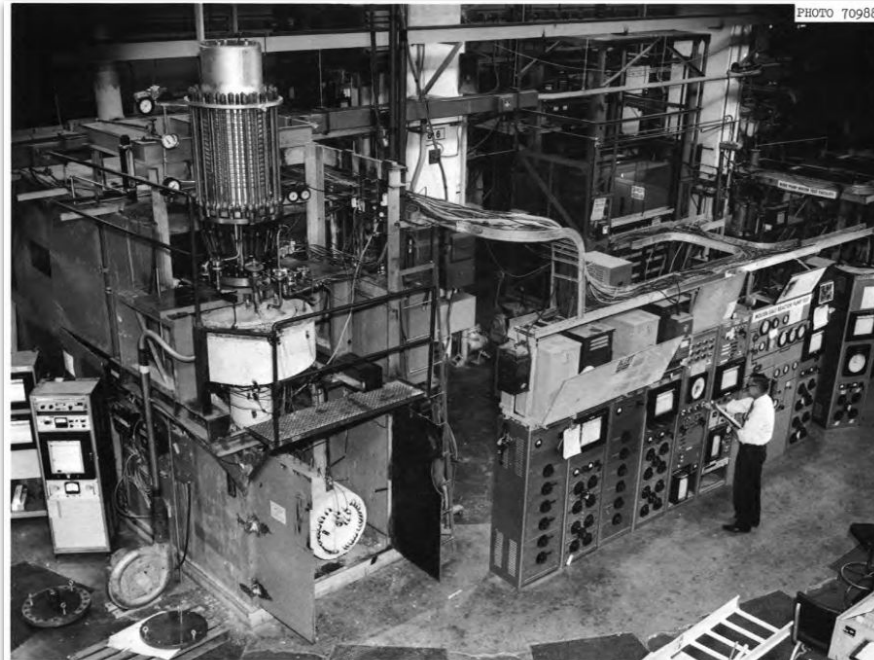


Fig. 4. Photograph of Molten-Salt Pump Test Stand.



Fig. 14. Damaged Swirl Preventer. Damage was caused by lodging of detached part of flow straightener in impeller inlet.

development philosophy  
build and test hardware

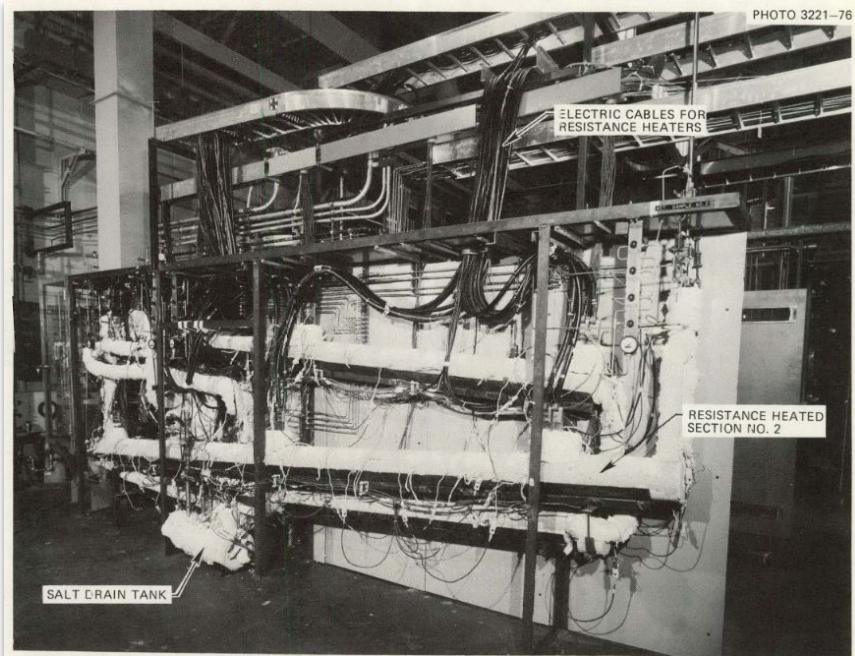


Fig. 4. Salt test loop with protective metal enclosures removed.

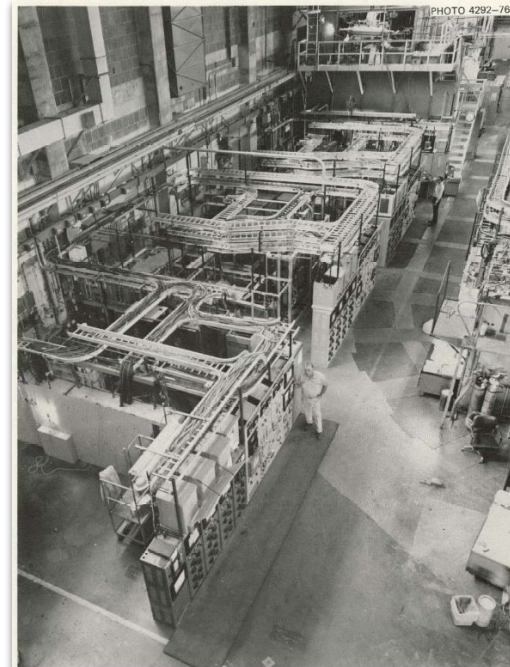


Fig. 4. Overhead view of test area showing corrosion loops FCL-2, -3, and -4.

development philosophy  
build and test hardware

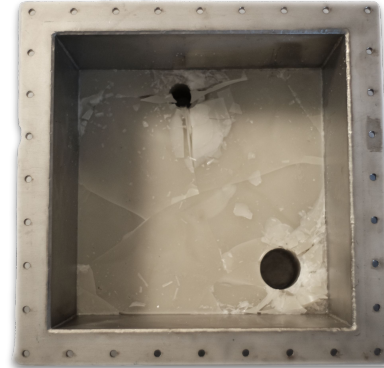
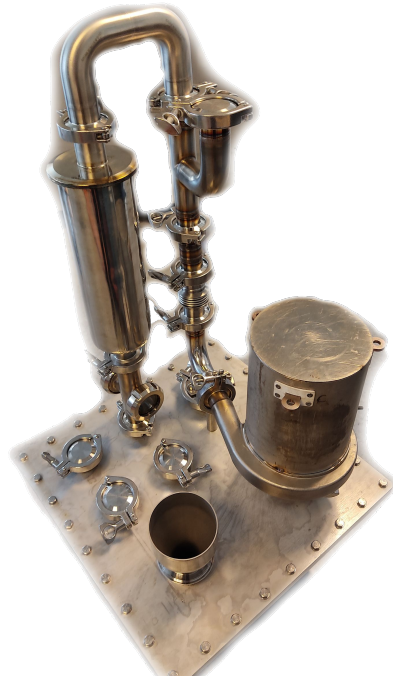
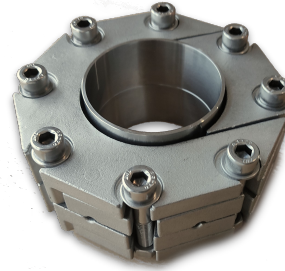




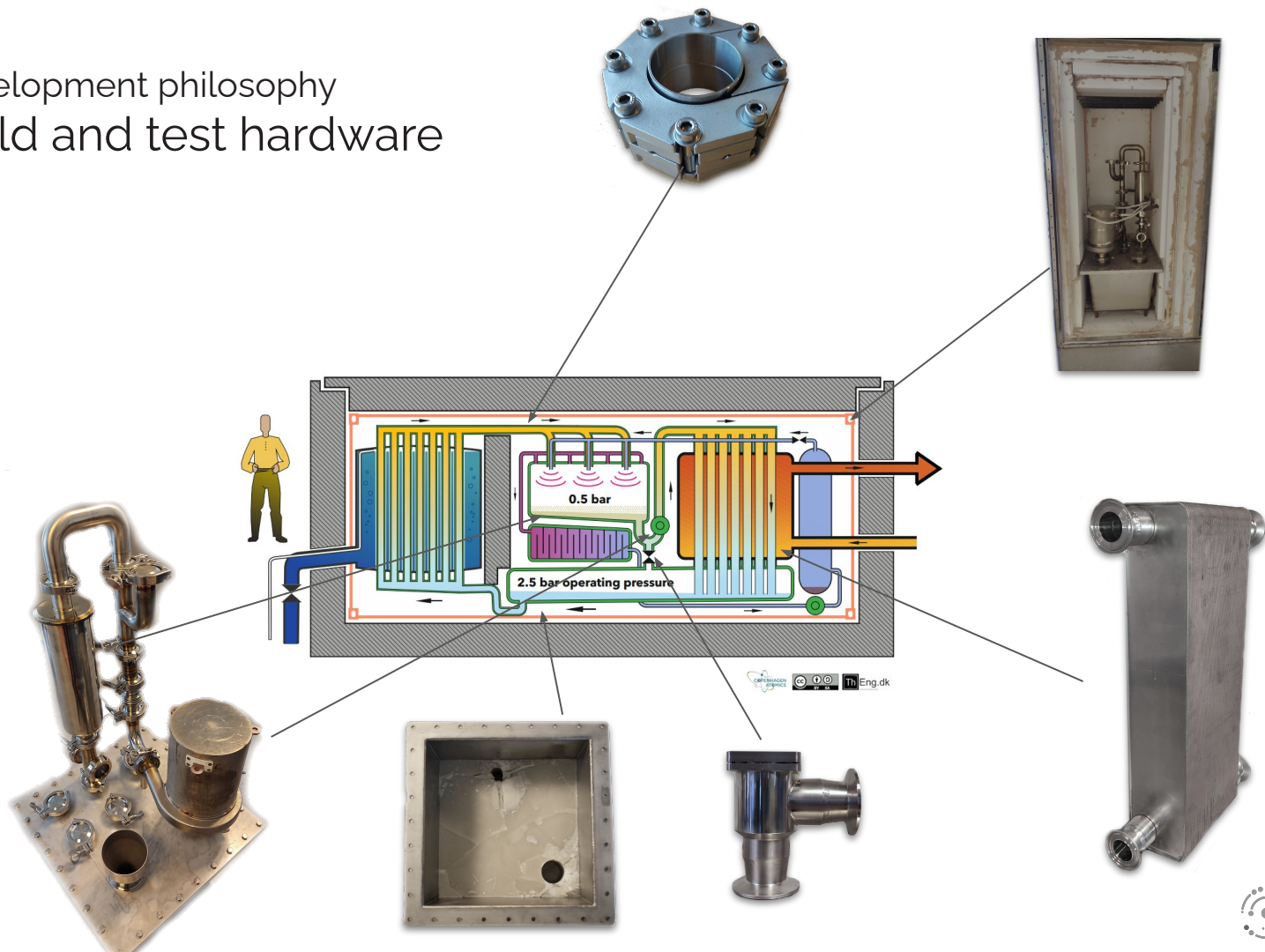
development philosophy  
build and test hardware



development philosophy  
build and test hardware



development philosophy  
build and test hardware





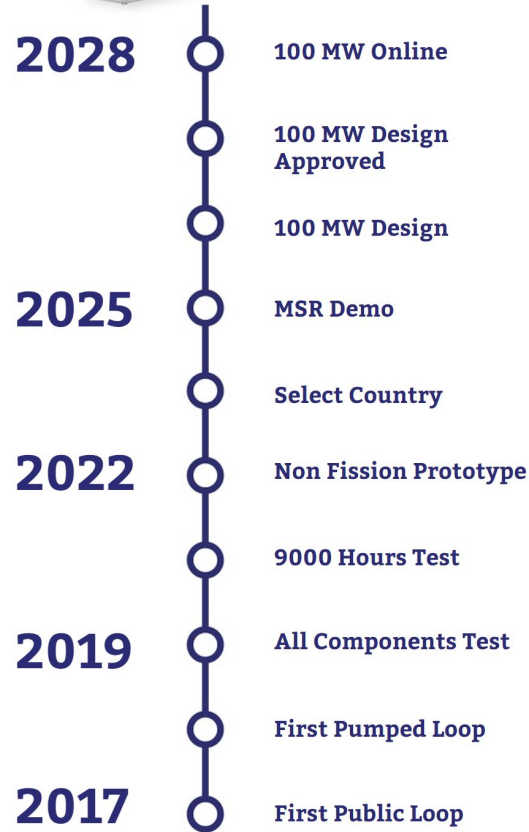
Copenhagen Atomics HQ  
Co-located with Alfa Laval



development philosophy  
build and test hardware



# upcoming milestones

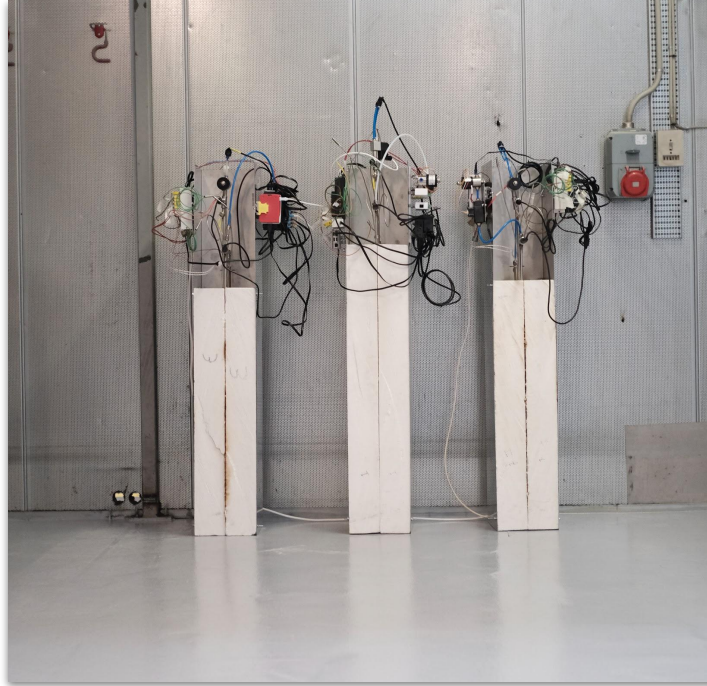




upcoming  
new manufacturing facilities



upcoming  
building radiation lab

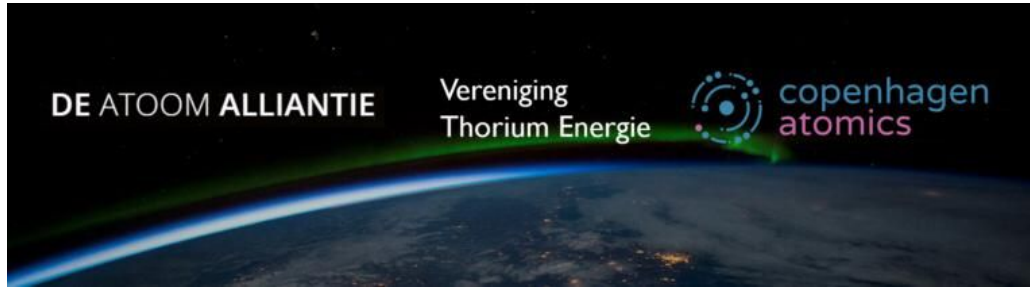


preparing for fertile FLiTh and FLiThU salt tests





support our  
petition



"Petition to make the Netherlands the  
1st country in EU to build and start a  
thorium molten salt reactor."

<http://start.thorium.today/>